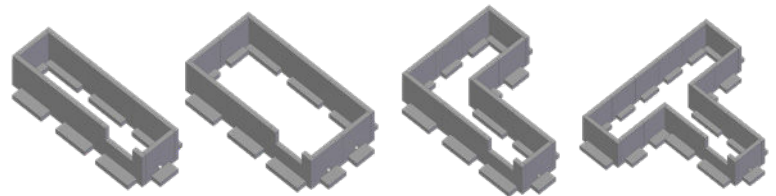




THE URBAN RAINGARDEN™

Developed by Porous Technologies, distributed by
Ferguson Waterworks



The Urban RainGarden™ is the complete green infrastructure solution for managing stormwater runoff in space-limited urban settings. The fully customizable, precast concrete biofiltration system is designed to capture, reduce, and treat stormwater runoff; improve water quality; and enhance streetscapes.

ADAPTABLE FOR ANY SPACE

Built from a system of interconnected precast concrete T-walls, the Urban RainGarden™ can be sized and configured to address the demands of any residential, commercial or municipal application and installs to your exact specifications without the use of a crane.

A SIMPLER SOLUTION

While many curbside urban vegetated surface treatment systems rely on deep-curb perimeters or cast-in-place concrete walls, the Urban RainGarden™ provides simplicity in both design and efficiencies for the contractor by eliminating these methods.

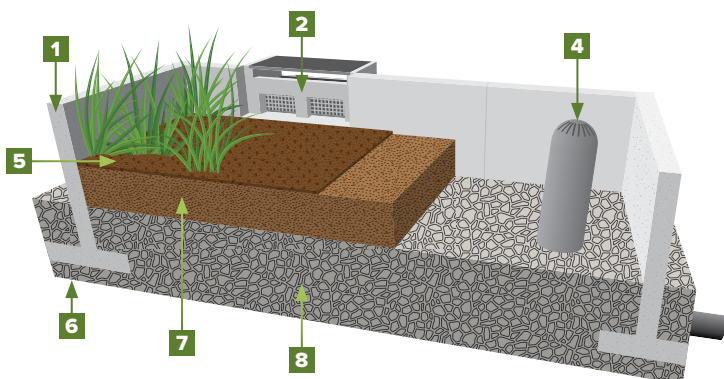
Have questions? Contact your local Ferguson Stormwater/Geo Specialist or Urban Green Infrastructure BMP Specialist for assistance with your next design.



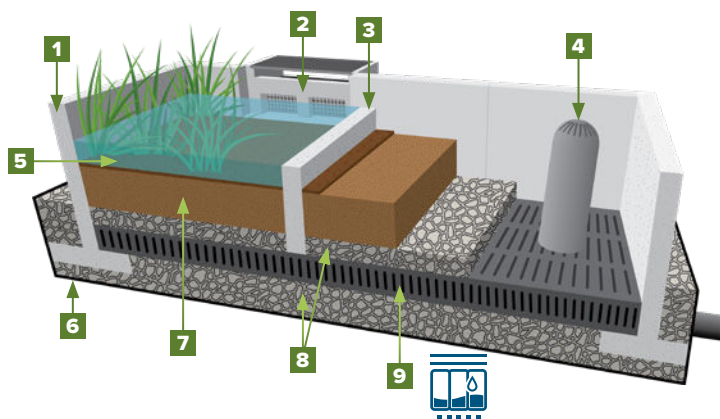
THE URBAN RAINGARDEN™

Available in standard and enhanced configurations

STANDARD SYSTEM



ENHANCED SYSTEM



- 1. Precast Concrete T-walls:** Modular interconnecting T-walls with inlet (shown) and/or outlet openings
- 2. Inlet Options:** The Rain Guardian™ pretreatment device (shown); rip-rap filter strip
- 3. The Garden Baffle™:** Vertical precast porous concrete baffle wall (shown). Option to create an inlet forebay or assist with curbline systems along steep streets to help as terraced baffle walls.
- 4. Outlet/Bypass/Overflow Options:** PVC riser with domed cover with underdrain/outlet pipe (shown); outlet curb cut; in-curb bypass. Option to include filter bag in overflow riser.
- 5. Landscaping Options:** Locally sourced native plants, shrubs or small trees; hardwood fibrous mulch

- 6. Infiltration/Retention Options:** Open bottom retention system w/bee-hive grate internal bypass (shown); open bottom infiltration system without bypass; closed bottom detention system, including 30 ml PVC liner, beehive grate, and underdrain
- 7. Soil Media:** Locally sourced or certified bioretention soil media; customized high-flow-rate media for enhanced approach
- 8. Reservoir Stone:** Locally sourced AASHTO #57 stone—40% void
- 9. Enhanced Storage (optional):** R-Tank modular stormwater system by Ferguson Enterprises



	STANDARD SYSTEM FEATURES	ENHANCED SYSTEM FEATURES
T-wall precast structure	✓	✓
Rain Guardian® pretreatment filter	*	✓
Garden Baffle™		✓
Internal domed overflow riser**	*	✓
R-Tank modular stormwater system		✓
Innovative high-flow media***		
30 ml PVC liner		✓

*recommended for most applications based on experience with maintenance needs and longevity of curbline vegetated BMPs

**recommend installing permanent filter bag in domed overflow

***media type, flowrate and sizing vary based on state regulatory approvals

Ready for a quote? Contact your local Ferguson Stormwater/Geo Specialist or Urban Green Infrastructure BMP Specialist for assistance with your next design.