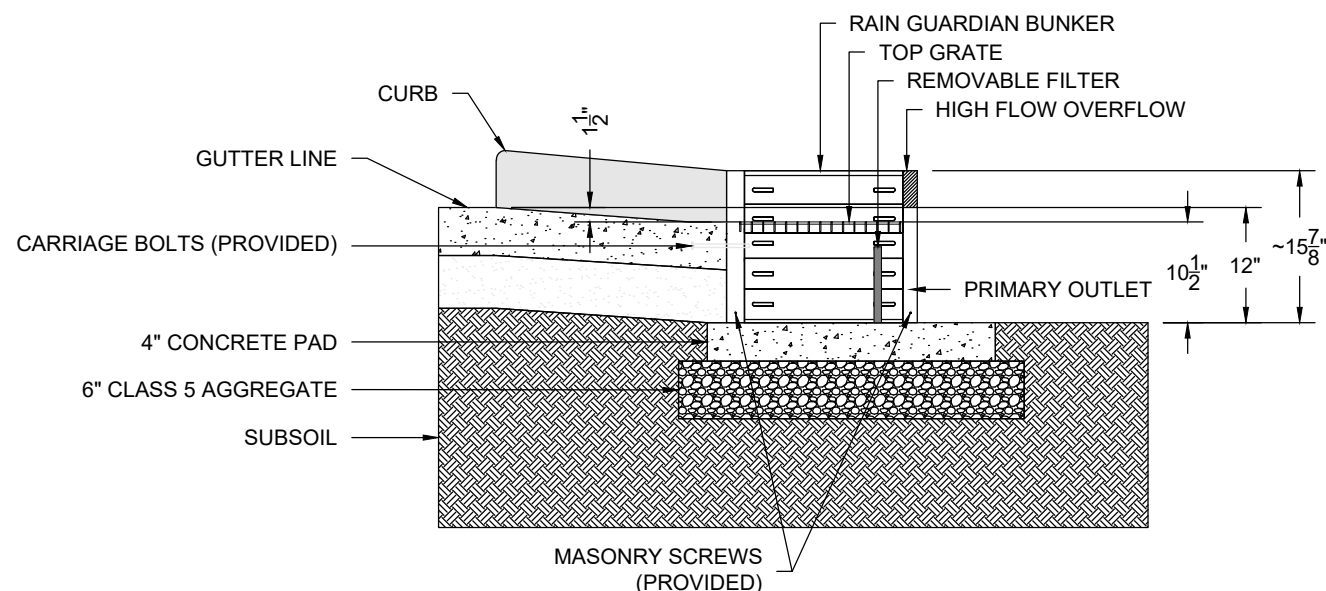


NOTES:

1. INLET WIDTH AND DISTANCE BETWEEN BACK OF CURB AND RAIN GUARDIAN BUNKER MAY VARY WITH SITE CONDITIONS. INSTALLATION FLUSH WITH THE BACK OF THE CURB CAN ALSO BE COMPLETED WITH THE RAIN GUARDIAN BUNKER.
2. CONCRETE PAD EXTENDS BEYOND THE FILTER WALL OF THE RAIN GUARDIAN BUNKER TO SERVE AS A SPLASH DISSIPATOR.

RAIN GUARDIAN BUNKER - PLAN VIEW



NOTES:

1. THE TOP OF THE CLASS 5 BASE (COMPACTED TO 95% STANDARD PROCTOR) IS PRECISELY 1'-4" BELOW THE GUTTERLINE ELEVATION.
2. THE TOP OF THE CONCRETE PAD IS PRECISELY 12" BELOW THE GUTTERLINE.

RAIN GUARDIAN BUNKER - SECTION VIEW

SPECIFICATIONS:

1. CHAMBER CONSTRUCTED OF RECYCLED PLASTIC LUMBER (95%+) MANUFACTURED AND DESIGNED TO ASTM C1028, D6108, D6109, D6111, D6117, AND D6341 (54 LBS).
2. TOP GALVANIZED METAL GRATE (35 LBS, 1" THICK) - 316 LB CONCENTRATED LOAD OR 158 LB/SQ-FT UNIFORM LOAD.

INSTALLATION NOTES:

1. INSTALL THE CONCRETE PAD WITH A 1'-10" OFFSET FROM THE BACK OF THE CURB TO ACCOMMODATE THE CONCRETE INLET. THIS DISTANCE MAY VARY BASED ON SITE CONDITIONS, BUT CONSIDERATIONS SHOULD INCLUDE SLOPE OF THE INLET AND BASIN SIDE SLOPES ADJACENT TO THE RAIN GUARDIAN BUNKER. POSITION RAIN GUARDIAN BUNKER SO PRIMARY OUTLET ALIGNS WITH TOE OF BASIN SIDE SLOPE TO AVOID SOIL INTERFERENCE WITH REMOVABLE FILTER WALL. THE CONCRETE PAD SHOULD BE REINFORCED WITH REBAR.
2. EXCAVATE 1'-10" BELOW THE GUTTERLINE ELEVATION (I.E. THE BIORETENTION OVERFLOW ELEVATION) TO ACCOMMODATE THE 12" PONDING DEPTH, 6" CLASS 5 AGGREGATE, AND 4" CONCRETE PAD TO WHICH THE RAIN GUARDIAN BUNKER WILL BE SECURED. THEREFORE, THE TOP OF THE FINISHED CONCRETE PAD IS PRECISELY 12" BELOW THE GUTTERLINE ELEVATION. THE TOP OF THE RAIN GUARDIAN BUNKER METAL GRATE WILL BE 10-1/2" ABOVE THE TOP OF THE CONCRETE PAD AND 1-1/2" BELOW THE GUTTERLINE ELEVATION TO ACCOMMODATE A SLOPED INLET FROM THE GUTTER TO THE RAIN GUARDIAN BUNKER.
3. THE RAIN GUARDIAN BUNKER SHOULD BE POSITIONED 2" FROM THE EDGE OF THE CONCRETE PAD CLOSEST TO THE BACK OF THE CURB. THEREFORE, THE RAIN GUARDIAN BUNKER WILL BE 2' FROM THE BACK OF THE CURB.
4. USING THE PILOT HOLE IN EACH OF THE FOUR CORNER POSTS, PREDRILL 5/32" HOLES INTO THE CONCRETE PAD WITH A 4-1/2" MASONRY BIT AND HAMMER DRILL.
5. SECURE RAIN GUARDIAN BUNKER TO CONCRETE PAD WITH FOUR 3/16" X 2-3/4" MASONRY SCREWS (PROVIDED).
6. INSTALL FRAMING FOR INLET BETWEEN RAIN GUARDIAN BUNKER AND BACK OF CURB. TOP ELEVATIONS OF THE FRAMING SHOULD MATCH THE TOP OF THE CURB ON THE STREET SIDE AND THE TOP OF THE RAIN GUARDIAN BUNKER ON THE BIORETENTION SIDE.
7. WHEN POURING THE CONCRETE INLET, ENSURE THE CARRIAGE BOLTS ON THE RAIN GUARDIAN BUNKER ARE SURROUNDED BY AT LEAST 2" OF CONCRETE ON ALL SIDES.
8. SIDE CURBS OF THE POURED INLET MUST HAVE AN INSURMOUNTABLE PROFILE TO PREVENT WATER FLOW FROM OVERTOPPING THE DOWNSTREAM SIDE OF THE INLET.
9. WRAP CABLE THROUGH TOP METAL GRATE AND SECURE WITH PROVIDED CLAMP. ENSURE SUFFICIENT SLACK EXISTS IN CABLE TO ALLOW FOR GRATE REMOVAL AND PLACEMENT IN CONCRETE INLET DURING CLEANING. REMOVABLE FILTER WALL SHOULD BE INSTALLED WITH FILTER FABRIC FACING THE RAIN GUARDIAN BUNKER INLET.

DEVELOPED BY:



U.S. PATENT NO(S): 8,501,016 AND 8,858,804



FOR ADDITIONAL INFORMATION PLEASE CONTACT:
FERGUSON WATERWORKS,
1-800-448-3636, www.ferguson.com

**RAIN GUARDIAN
BUNKER PRETREATMENT CHAMBER
BIORETENTION PONDING DEPTH: 12"
TYPICAL DETAIL**

DRAWN BY
JKB

DATE
6/19/2022

SHEET NO.

1 of 1