



## MONTANA SULPHUR & CHEMICAL COMPANY

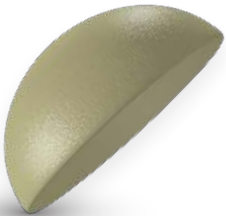
### YELLOWSTONE BRAND™ *Disintegrating* Sulfur Granules - 90% Sulfur

#### PRODUCT INFORMATION

FOR SOIL APPLICATION ONLY

Yellowstone Brand Disintegrating Sulfur is a sulfur-bentonite product. It is designed to provide a strong pellet for dry handling, but it readily degrades into small particles following contact with moisture. This action allows for faster oxidation of the sulfur into its soluble sulfate form, which plants need for optimal growth. Please consider Montana Sulphur & Chemical Company's YELLOWSTONE BRAND Sulfur to meet your crops' sulfur needs.

#### SULFUR: THE 4TH MAJOR NUTRIENT



N-P-K-and Sulfur! Nitrogen, phosphorus and potassium have traditionally been known as the primary macronutrients required by plants. These three building blocks for plant growth are offered in fertilizer programs. The Sulphur Institute states that for normal plant growth a FOURTH nutrient is required: Sulfur.

Sulfur is also an essential macronutrient, commonly referred to as a secondary macronutrient, and is needed in large amounts by crops. Sulfur is just as important in the formation of protein as nitrogen and phosphorus. The natural oxidation of elemental sulfur particles creates zones of reduced pH which can improve the availability of other essential nutrients and can help condition the soil. This underutilized nutrient aids in the production of chlorophyll, which plants use to capture energy to produce vitamins, sugars, starches and oils. Sulfur is such a vital element, that without it, plant and animal life as we know it would cease to exist.

Sulfur works synergistically with nitrogen; their combined effects have greater impact on crop yield and plant nutrient recovery than the sum of their separate effects.

Elemental sulfur is immobile in the soil, unlike sulfate; which can be leached deeper in sandy soils.



**MONTANA SULPHUR  
& CHEMICAL COMPANY**

Visit us at [montanasulphur.com](http://montanasulphur.com) | Office: 406-252-9324 | [sales@montanasulphur.com](mailto:sales@montanasulphur.com)  
Fax: 406-252-8250 | 627 ExxonMobil Road, Billings, MT 59101

