

SPECIFICATIONS

MODEL TYPE

MATERIAL PROPERTY	TURRET	FOXHOLE
Weight of steel reinforced, cold joint secured monolithic concrete structure	1,030 lbs	2,570 lbs total (inlet, middle, outlet)
Concrete minimum compressive strength	4,000 psi at 28 days	4,000 psi at 28 days
Concrete air entrained	4-8% by volume	4-8% by volume
Manufacturing & design standard	ASTM C858	ASTM C858
Standard exterior dimensions	46" x 50" base, 19.5" total height	2' - 11" x 1' - 7" x varies based on sidewalk width

PROPERTY OF RECYCLED PLASTIC LUMBER	BUNKER
Plastic lumber shall be manufactured with recycled HDPE, post-industrial and post-consumer	95%+
Flexural Strength	ASTM D6109, 1,350 psi
Flexural modulus secant @ 1% strain	ASTM D6109, 79,000 psi
Thermal expansion	ASTM D6341, 0.000058 in/in/°F
Lb/ft of recycled plastic lumber	1.5 lbs
Dry filter box total weight	54 lbs
Standard exterior dimensions of dry filter box	(51.25" L) x (20" W) x (16" H)

MEASUREMENT	TURRET	FOXHOLE	BUNKER
Typical drop from edge of pavement grade to outlet into bioretention	10.5"	7.5"	7.5" and 10.5" options



RAIN GUARDIAN

PRETREATMENT FOR BIORETENTION SYSTEMS





EXTEND THE LIFE OF YOUR BIORETENTION/RAIN GARDEN/VEGETATED BMP SYSTEM BY KEEPING TRASH, LEAVES AND OTHER DEBRIS OUT

Rain Guardians provide effective pretreatment for stormwater/bioretention/rain garden/vegetated BMP systems and are available in various configurations to meet both commercial and residential needs. The grate, filter and chamber combination captures leaves, trash and other debris with overflow points preventing inlet debris from causing bypass before the bioretention system reaches capacity. These pretreatment devices are often used in urban curblines applications that lack the space for typical sediment forebays.

Maintenance is simple with Rain Guardian pretreatment devices, as sediment and debris can be easily removed from the chamber with a shovel and the drop-in filter can be cleaned with a broom or hose.



BENEFITS

- Maximizes capacity and extends the life of bioretention systems
- Installation (placement and securing) takes minutes
- Works well with new construction, retrofits and tight urban spaces
- Maintenance is simple and only requires a shovel and broom or hose
- Helps eliminate bypass and sediment build-up, protecting surrounding vegetation
- Simplifies visual inspections of accumulated sediment depth

MODELS AVAILABLE

All functional elements apply to all chambers



Applications:
Commercial - no sidewalk

RAIN GUARDIAN TURRET

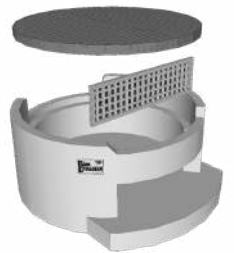
Top grate: Captures leaf litter and coarse debris

Chamber base combination: Serves as settling chamber for heavier particles

Filter wall: Allows chamber to dry between rain events

Debris walls: Restrict floatable debris from entering or exiting garden

Configurations: Available in 90, 135 and 180 degree turn configurations



Applications:
Commercial - with sidewalk

RAIN GUARDIAN FOXHOLE

High-strength composite lid:

- Easily supports pedestrian and bike passage (unit rated for concentrated loads of up to 11,200 lbs)
- Lightweight design - 38 lbs/lid
- Easily maintained

Modular design:

- Suitable for any length inlet - 3' increments
- Units are easily connected
- Adaptable to sidewalk widths



Applications: Residential

RAIN GUARDIAN BUNKER

Metal grate:

- Captures leaf litter and coarse debris
- Lightweight design
- Easily maintained

Anodized aluminum filter:
Corrosion resistant

Pre-assembled recycled plastic chamber:
Ultra-resistant to rotting

