

# Trash Guard Plus® Installation Instructions

Trash Guard Plus® can be installed in a variety of catch basin configurations (or field conditions). In general the Trash Guard Plus® is mounted on the catch basin wall, centered over the outlet pipe.

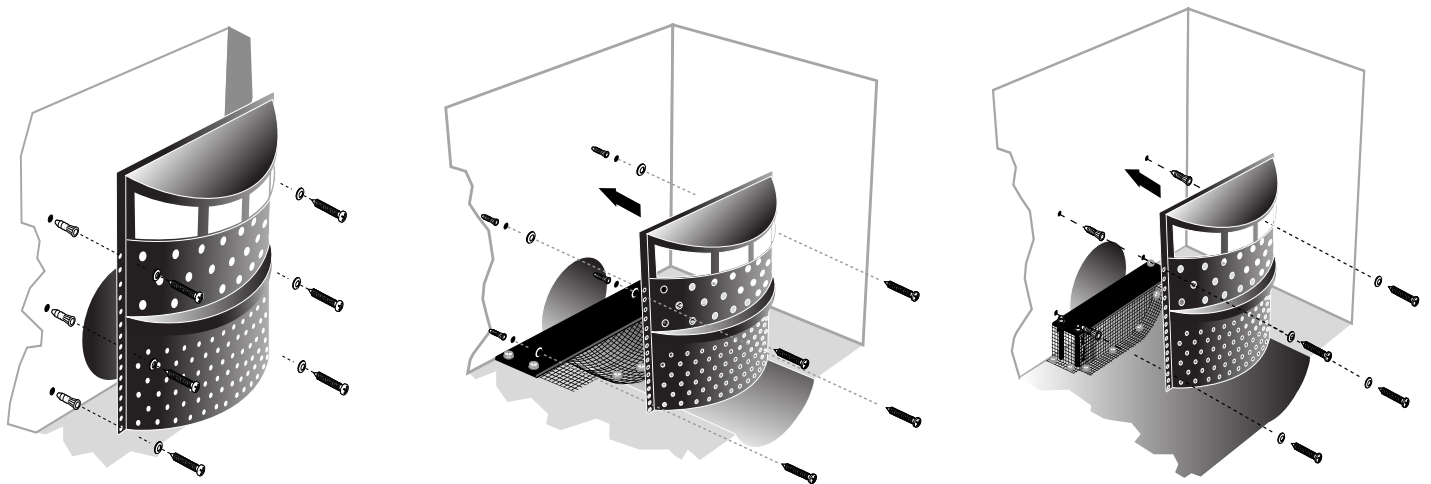
Before installing Trash Guard Plus®, A hydraulic calculation should be performed to determine maximum flow rate based on depth of the catch basin and size of Trash Guard Plus® used. This calculated model will determine maximum flow rate with no obstructions or varying amounts of trash build up, and determine drainage area required to support the calculated flow rate. Allowable trash build up and drainage area required for trash build up will determine maintenance frequency.

If catch basin conditions allow and increased flow rate and additional vertical capacity are desired, a model can be calculated to determine flow rate when extending Trash Guard Plus® from one inch to seven inches from the catch basin wall. As above, this calculated model will determine maximum flow rate with no obstructions or varying amounts of trash build up. Contact Trash Guard Plus® for assistance in determining flow rate and drainage areas under varying field conditions.

The following instructions are organized in sections described as follows:

- Section 1 – Trash Guard Plus® installed on a flat perpendicular wall with a flat bottom
- Section 2 – Bottom Plate installed on an inverted bottom
- Section 3 – Trash Guard Plus® installed on a flat perpendicular wall with an inverted bottom
- Section 4 – Trash Guard Plus® installed on tiered brick wall escalating width from top to bottom with an inverted or flat bottom.
- Section 5 – Trash Guard Plus® installed on concaved wall reasonable flat at top and bottom with an inverted or flat bottom.
- Section 6 – Trash Guard Plus® installed extended front wall increase flow capacity with an inverted or flat bottom.

## EXAMPLES OF FLAT AND INVERTED BOTTOMS



**WARNING:** Improper installation of the Trash Guard Plus® or failure to keep the area around the Trash Guard Plus® free from sediment, debris and litter after installation may result in clogging of the storm water drainage system and increase the risk of flooding during times of heavy rainfall. It is important to clear sediment, debris and litter from around the Trash Guard Plus® at least four (4) times a year and more frequently in areas with large amounts of vegetation or litter. Please contact your local Trash Guard Plus® distributor with any questions regarding the installation or regular maintenance requirements of the Trash Guard Plus®.

## Section 1 (Diagram I)

### Items Included:

- Trash Guard Plus® (Chosen Size)
- Seven Plastic Anchors
- Seven Flat Washers
- Seven 1.75" x .25" Stainless Steel Phillips Screws

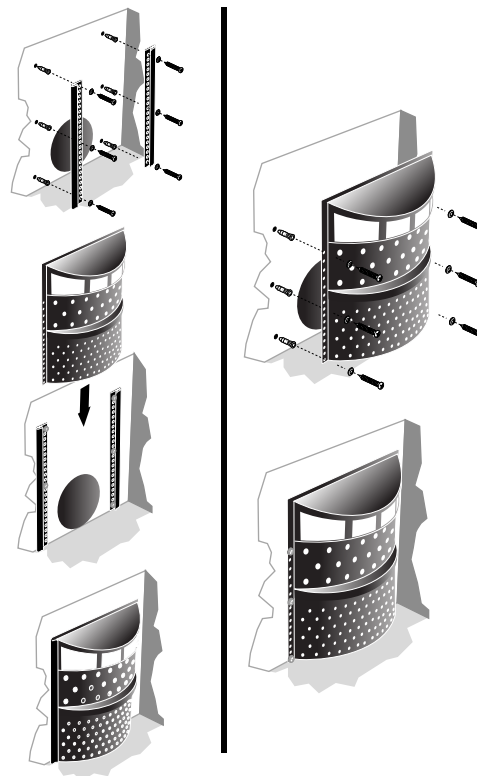
### Tools Needed:

- Cordless Hammer Drill
- 5/16" Masonry Drill Bit
- Phillips Screwdriver

## Installation Instructions

Can be attached with or without retaining rails.

1. Place Trash Guard Plus over outlet pipe.
2. Drill 5/16" hole top and bottom each side.
3. Insert plastic anchor and attach washer and phillips screws as shown in diagram.



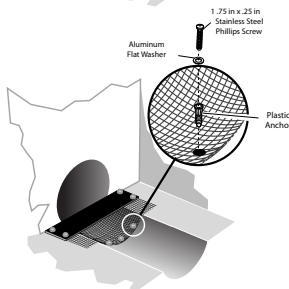
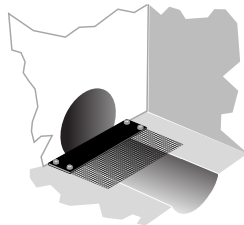
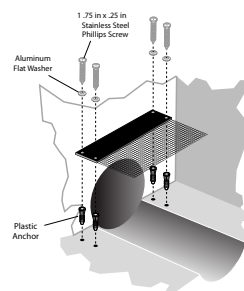
## Section 2 (Diagram A & B)

### Items Included for A:

- Bottom Plate with plastic netting attached
- Seven Plastic Anchors
- Seven Flat Washers
- Seven 1.75" x .25" Stainless Steel Phillips Screws

### Tools Needed:

- Cordless Hammer Drill
- 5/16" Masonry Drill Bit
- Phillips Screwdriver

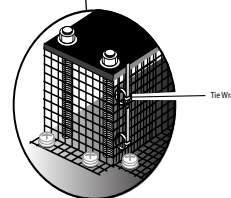
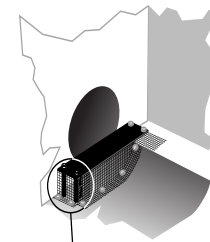
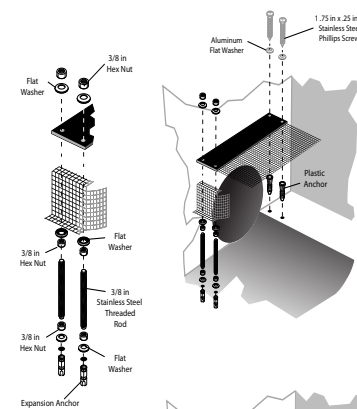


### Items Included for B:

- Bottom Plate with plastic netting attached
- Seven Plastic Anchors
- Seven Flat Washers
- Seven 1.75" x .25" Stainless Steel Phillips Screws
- Stainless Steel All Thread Rod Cut to Size
- Fourteen Hex Nuts & Flat Washers
- Four Expansion Anchors
- Plastic Netting (if excess amount on plate is not enough)
- Two Tie Wraps

### Tools Needed:

- Cordless Hammer Drill
- 5/16" Masonry Drill Bit for Plastic Anchors
- 1/2" Masonry Drill Bit for Expansion Anchors
- Phillips Screwdriver



## Installation Instructions For A

1. Place bottom plate over inverted bottom with level sides. (Front and Back)
2. Drill 5/16" holes as shown in diagram.
3. Insert plastic wall anchors as shown in diagram A.
4. Attach with washer and screw as shown.

## Installation Instructions For B

1. Follow instructions A if one side is level.
2. Drill 1/2" holes to accommodate expansion anchors.
3. Cut stainless steel rod to desired length. (Allow 1" inside expansion anchor and 1" through bottom plate)
4. Attach washers and hex nuts as shown in diagram.
5. Attach netting as shown in diagram.

## Section 3 (Diagram C) Installation Instructions

### Items Included:

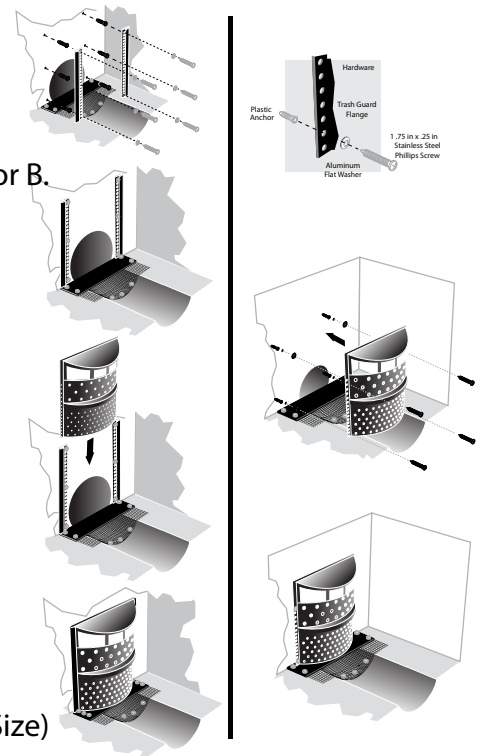
- Same as Section 2 A or B
- Trash Guard Plus® (Chosen Size)
- Seven Plastic Anchors
- Seven Flat Washers
- Seven 1.75" x .25" Stainless Steel Phillips Screws

### Tools Needed:

- Same as Section 2 A or B

Can be attached with or without retaining rails.

1. Follow instruction for Section 2 A or B.
2. Follow instruction for Section 1



## Section 4 (Diagram D & G) Installation Instructions

### Items Included:

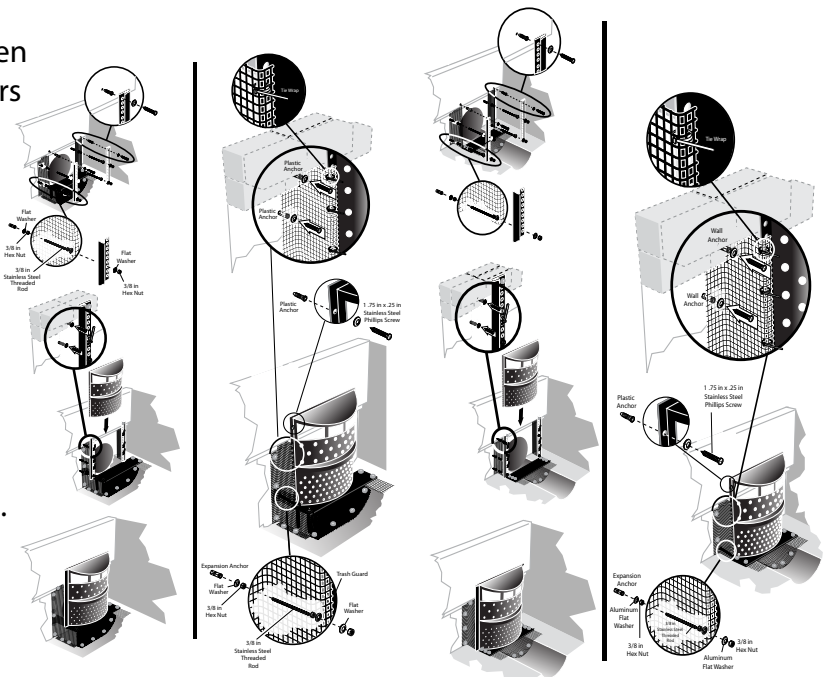
- Same as Section 2 A or B If inverted bottom
- Trash Guard® Plus (Chosen Size)
- Plastic Netting for Sides (Length Determined by Trash Guard Plus Size)
- Fourteen Plastic Anchors
- Fourteen Flat Washers
- Fourteen 1.75" x .25" Stainless Steel Phillips Screws
- 3' Stainless Steel All-Tread Rod
- Seven Stainless Steel Hex Nuts and Seven Flat Washers and two Expansion Anchors
- Seven Tie Wraps

### Tools Needed:

- Cordless Hammer Drill
- 5/16" Masonry Drill Bit
- Phillips Screwdriver

### Additional

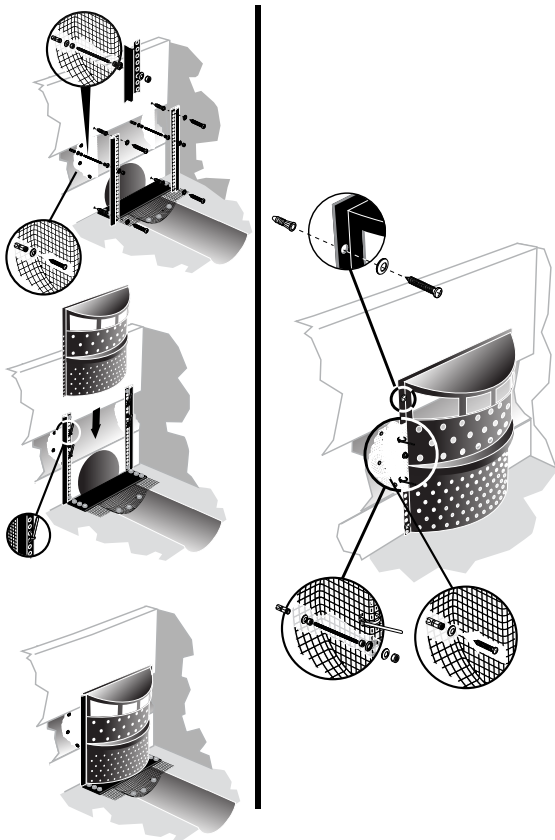
- 1/2" Masonry Drill Bit
- Hacksaw



## Installation Instructions

Can be attached with or without retaining rails.

1. Attach bottom plate to floor directly under area where Trash Guard Plus® will sit. (Use either A or B bottom instructions)
2. Drill the 5/16" holes on each side of Trash Guard Plus® near top and insert plastic anchors.
3. Drill 1/2" holes on each side of Trash Guard® near bottom insert expansion anchors.
4. Cut two sections from all thread Rod the length required for Trash Guard Plus® or retaining rails to hang perpendicular with top attached to wall (allow 1" inside anchors and 1" through Trash Guard Plus® Flange or retaining rails)
5. Secure Trash Guard Plus® or retaining rails to top as shown in diagram.
6. Secure rods to expansion anchors and Trash Guard Plus® or retaining rails as shown in insert.
7. Attach plastic netting to Trash Guard Plus® flange or retaining rails with tie wraps as shown in insert.
8. Cut mesh from top tier of bricks and secure with plastic anchor, screw and washer as shown in insert.
9. Continue process until netting is attached to wall top and bottom.



## Section 5 (Diagram F)

### Items Included:

- Same As Section 1
- Same As Section 2 A or B if inverted bottom

### Additional

- Plastic Netting for concave wall
- Seven Stainless Steel Screws, Flat Washers and Plastic Anchors

### Tools Needed:

- Same As Section 2 A or B

### Installation Instructions

1. Follow Instructions In Section 1 and Section 2 A or B if necessary
2. Attach Plastic Netting To Trash Guard Plus® Flange or retaining rails with Tie Wraps As Shown In Insert
3. Bend & Form Netting To Concave Wall As Shown In Insert
4. Drill 5/16" Holes To Secure Netting To Wall
5. Secure Plastic Netting To Wall With Phillips Head Screws, Plastic Anchors & Washers As Shown In Insert.

## Section 6 (Diagram H)

### Items Included:

- Same As Section 4

### Additional

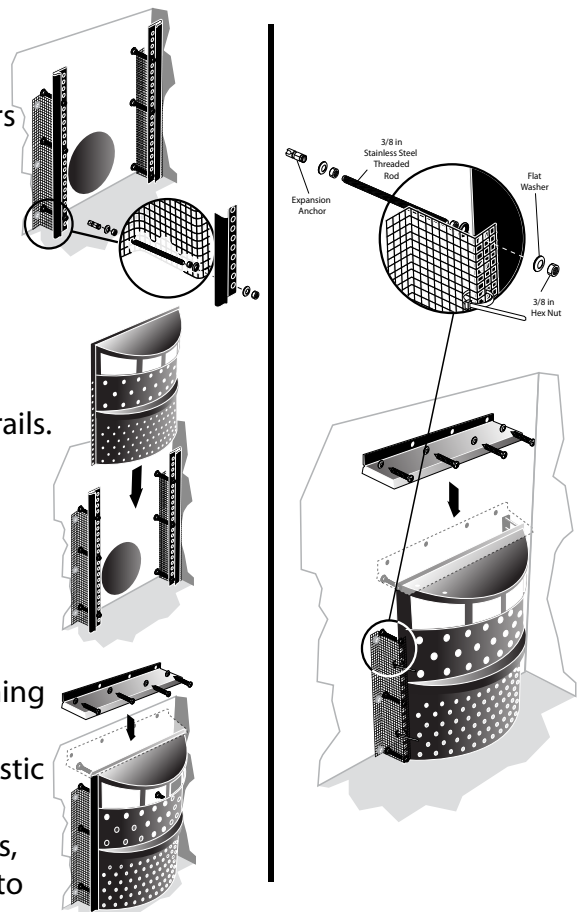
- Top Expansion Strip
- Seven Phillip Head Screws, Flat Washers and Plastic Anchors
- Seven Hex Nuts and Flat Washers
- Two Additional Expansion Anchors

### Tools Needed:

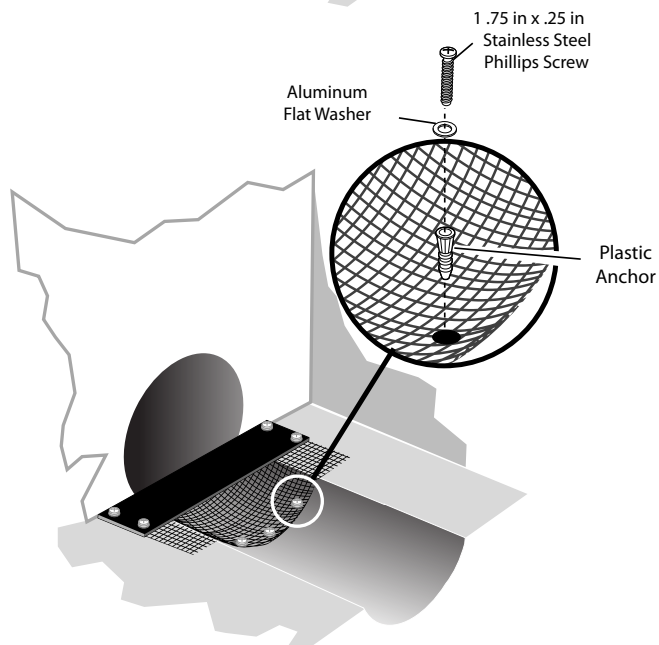
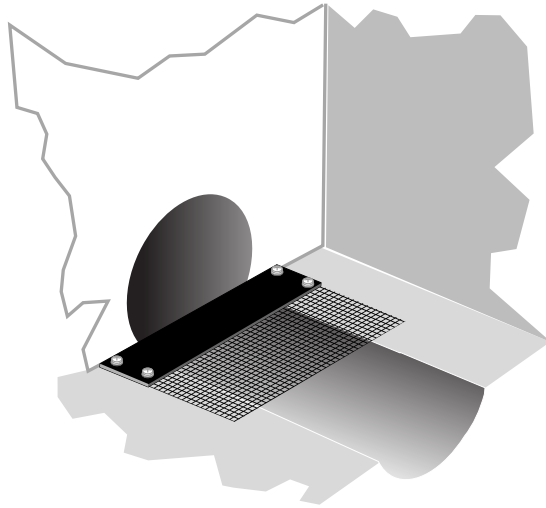
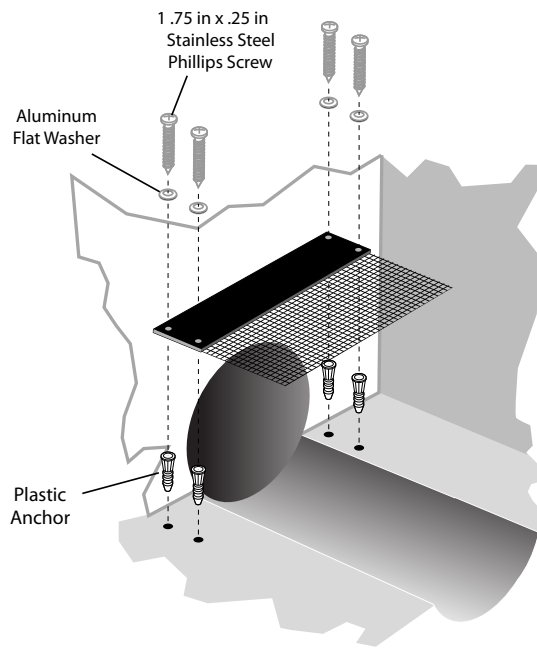
- Same As Section 4

### Installation Instructions

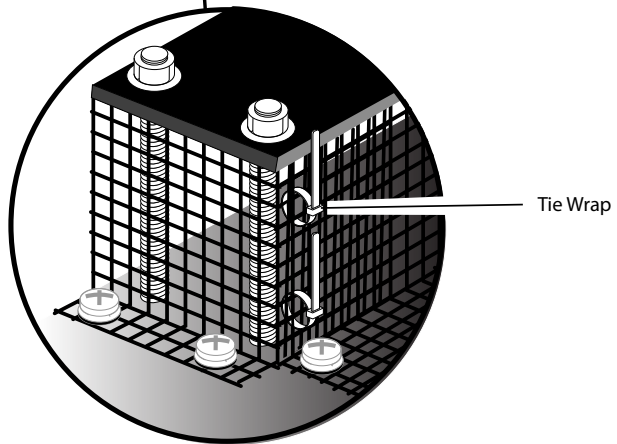
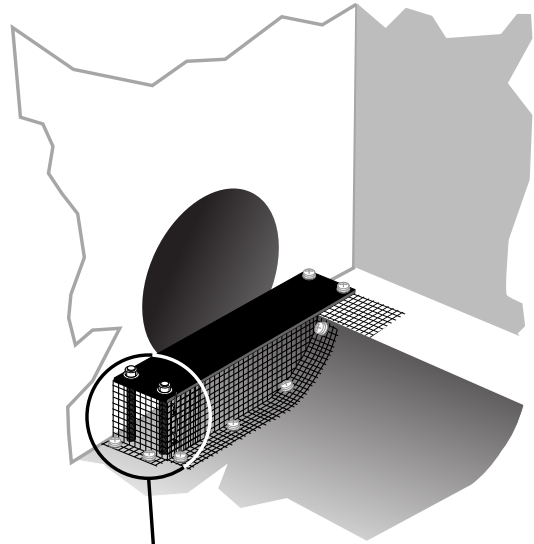
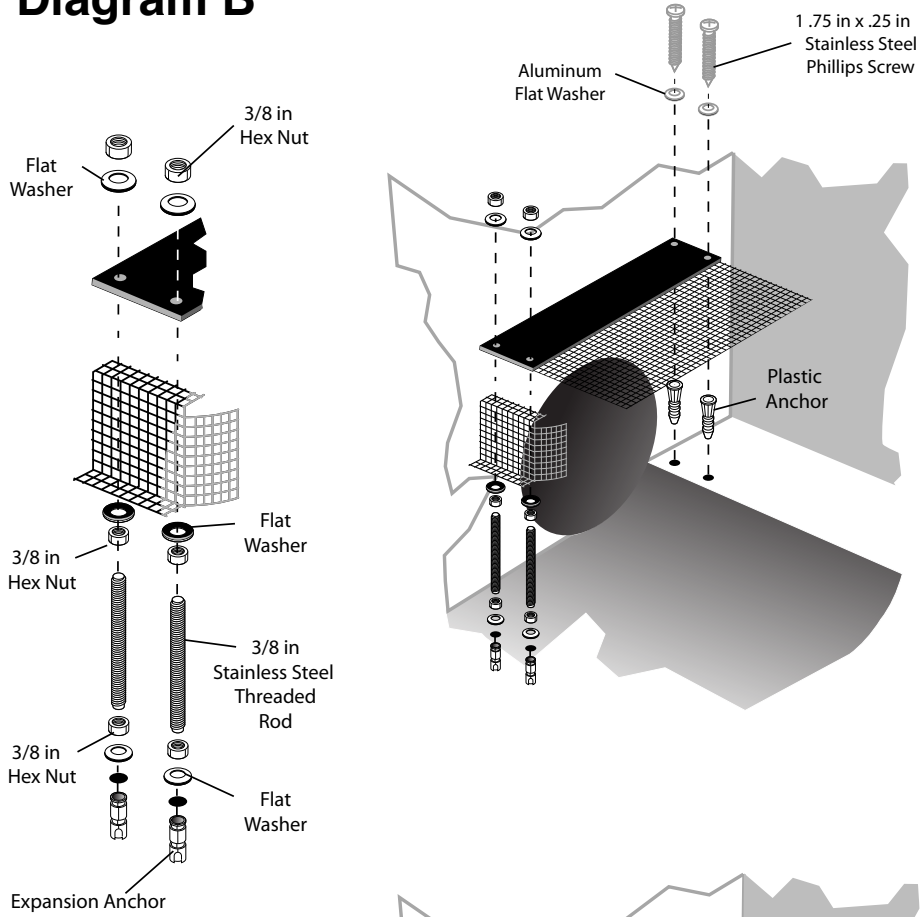
1. Follow Instructions In Section 4
2. Drill 1/2" holes each side of Trash Guard Plus® or retaining rails. Insert expansion anchors.
3. Cut four sections from all thread rod the expansion width desired. (allow 1" inside anchors & 1" through Trash Guard Plus® Flange or retaining rails.
4. Secure Rods to anchors & Trash Guard Plus® Flange or retaining rails as shown in insert.
5. Attach Plastic netting to Trash Guard Plus® Flange or retaining rails with tie wraps as shown in insert
6. Attach plastic netting to wall with phillips head screws, plastic anchors & washers as shown in insert.
7. Attach top expansion strip to wall with phillips head screws, plastic anchors & washers as shown. Allow extension strip to lay on top of Trash Guard Plus® as shown.



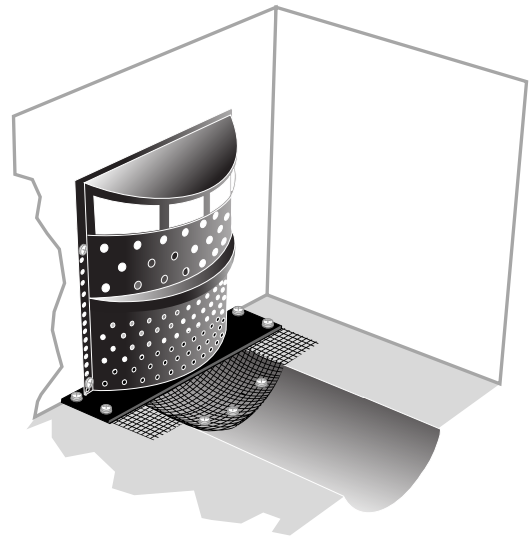
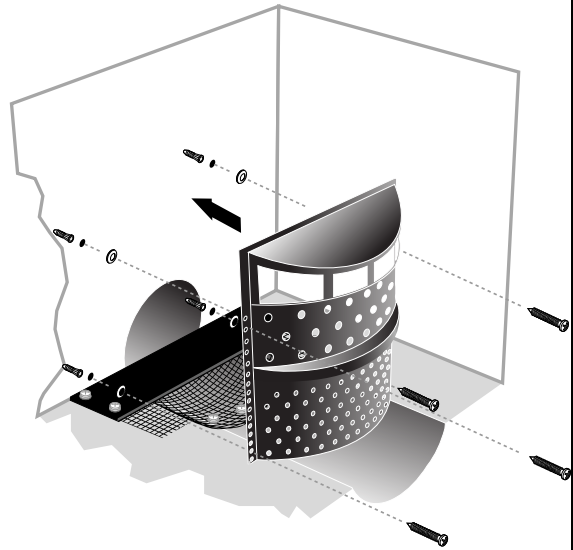
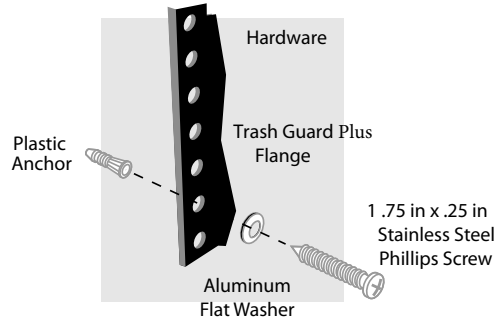
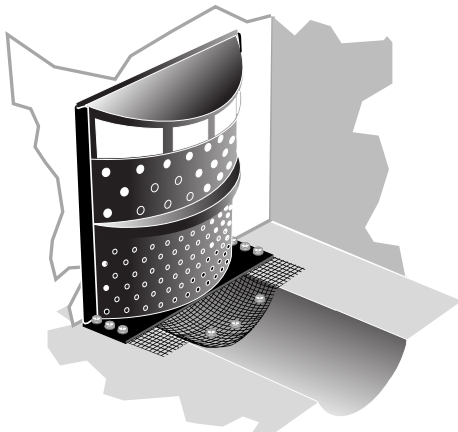
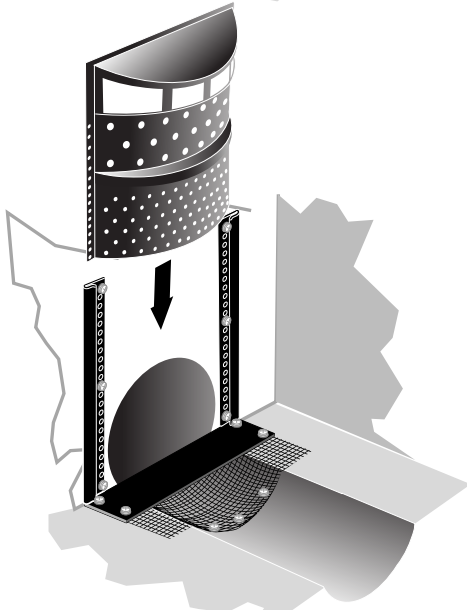
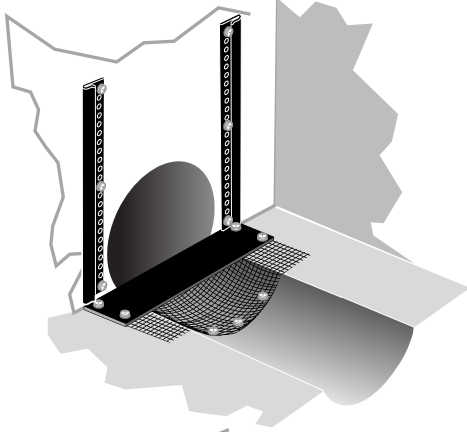
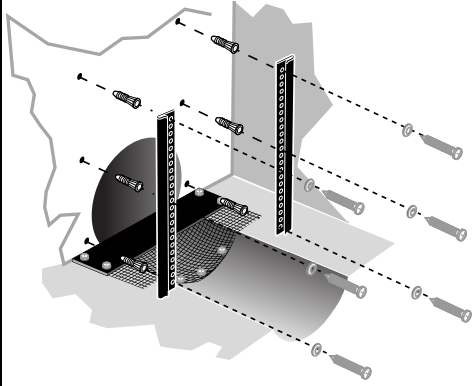
# Diagram A



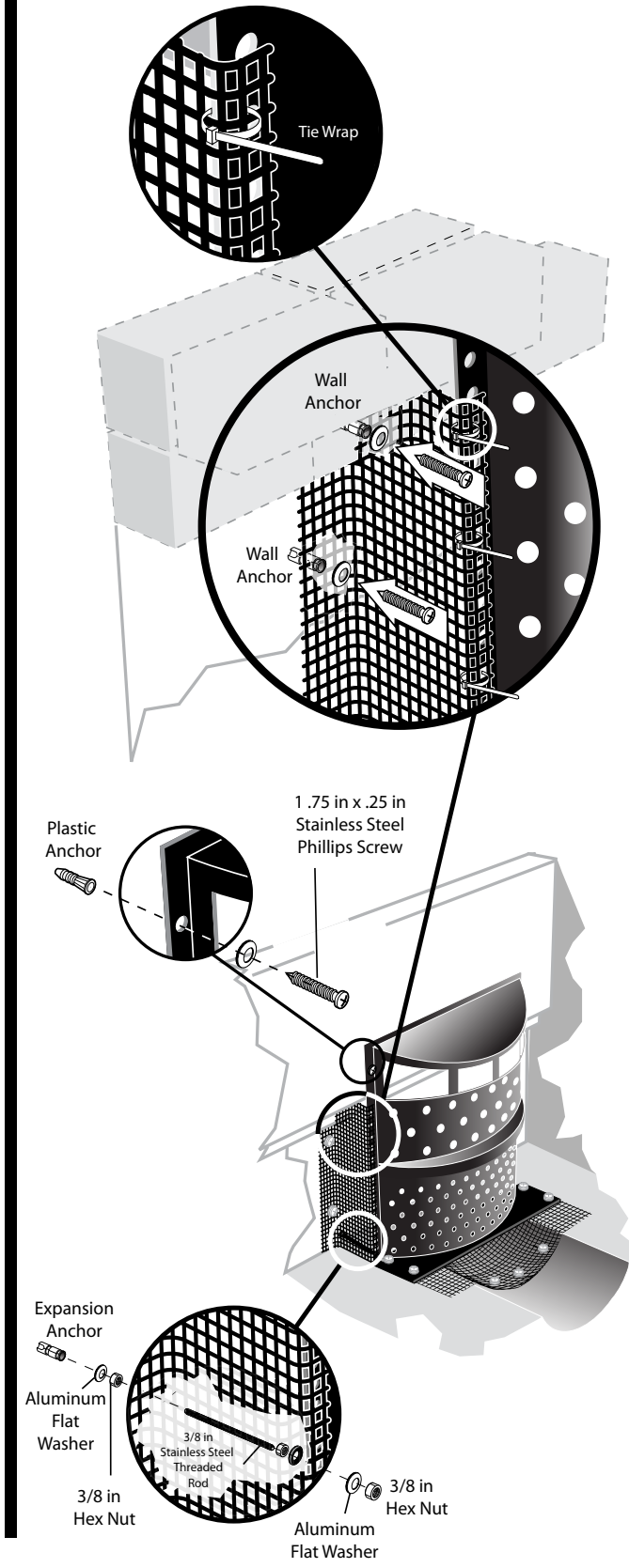
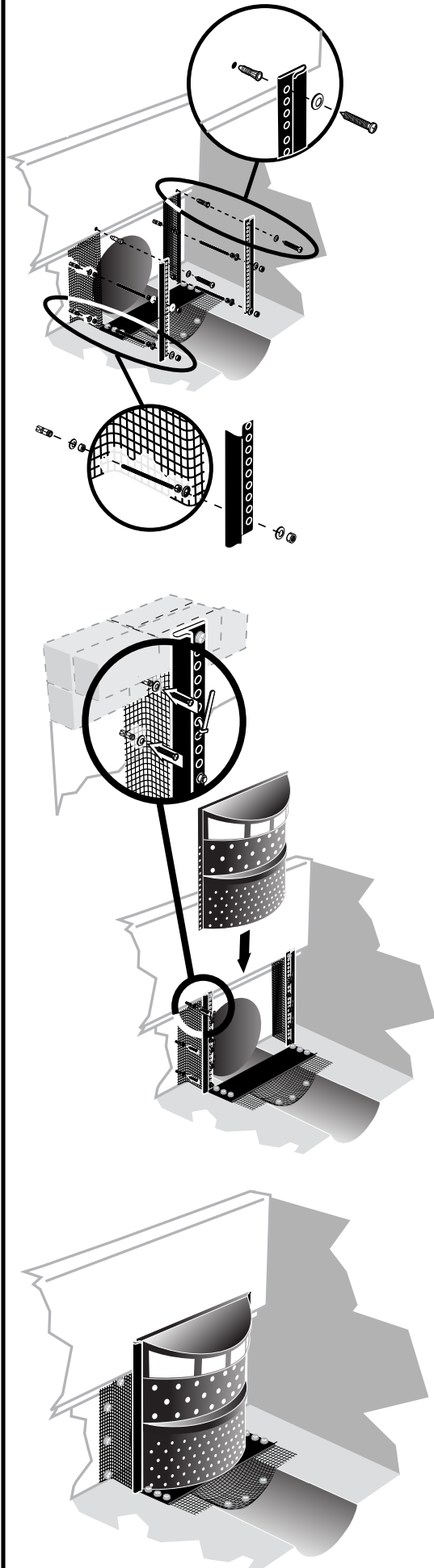
# Diagram B



# Diagram C

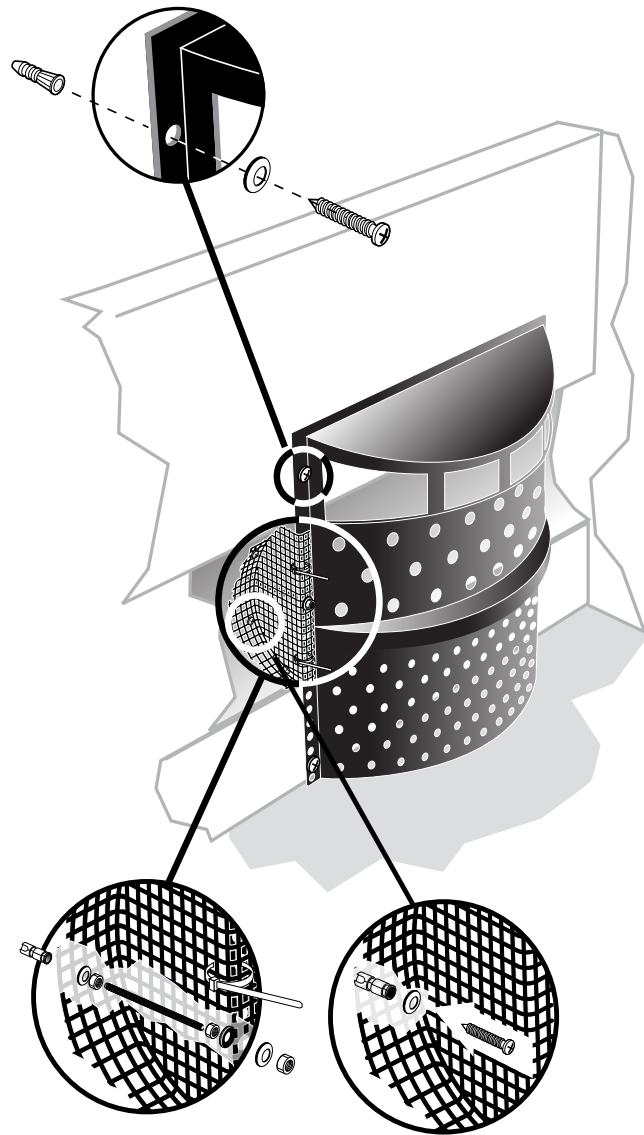
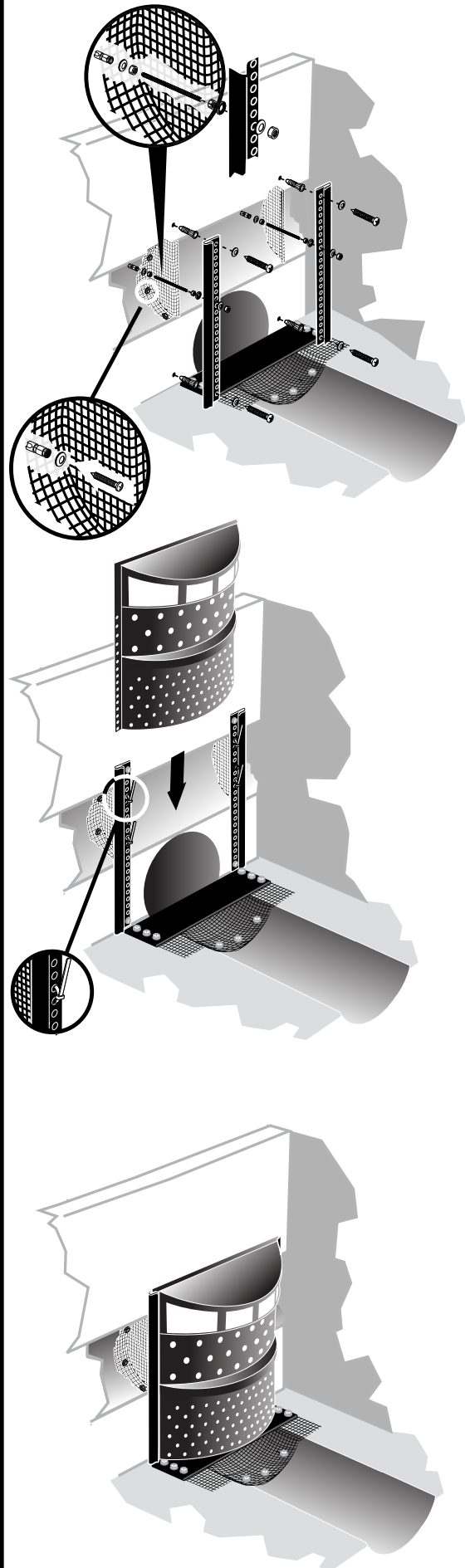


# Diagram D

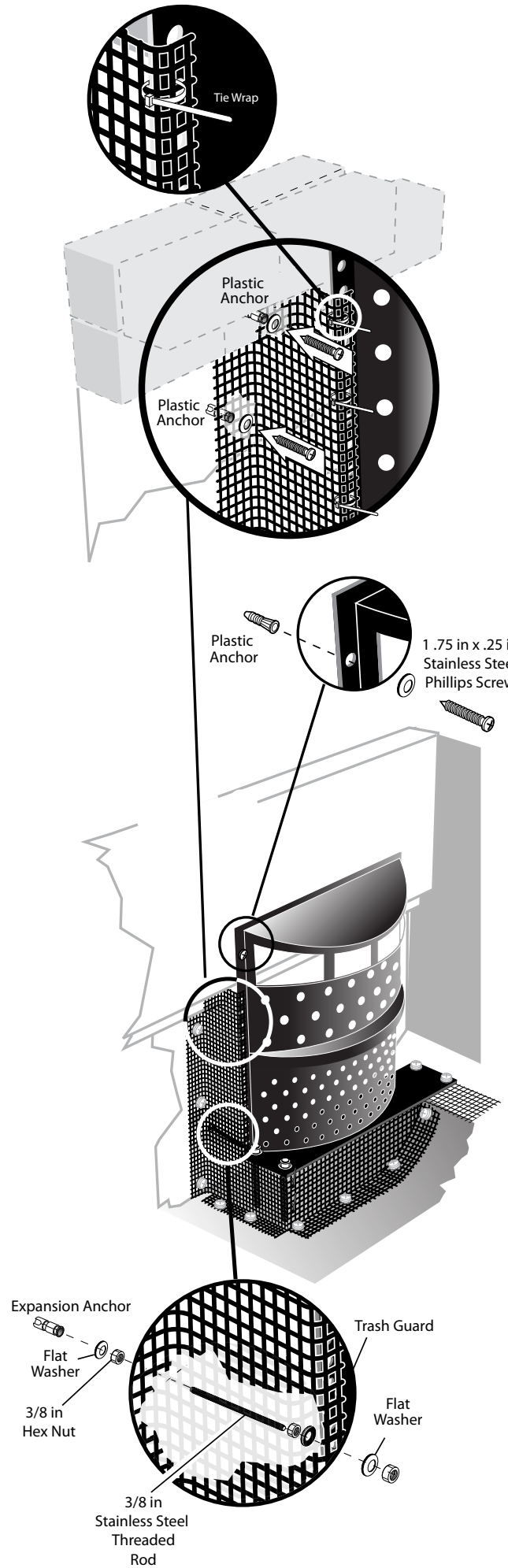
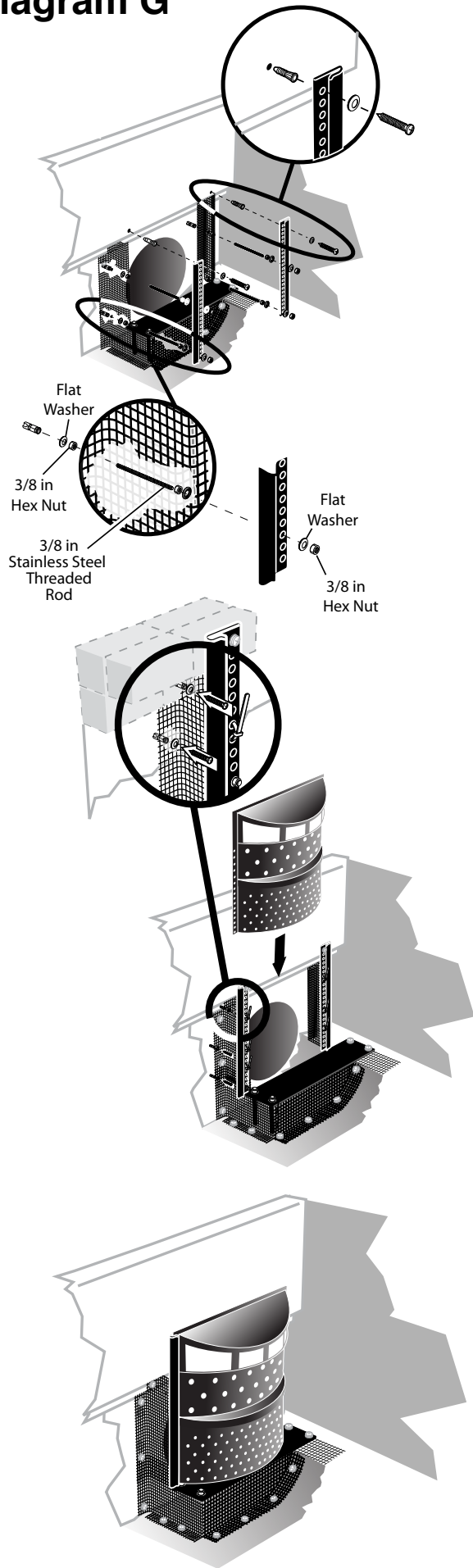




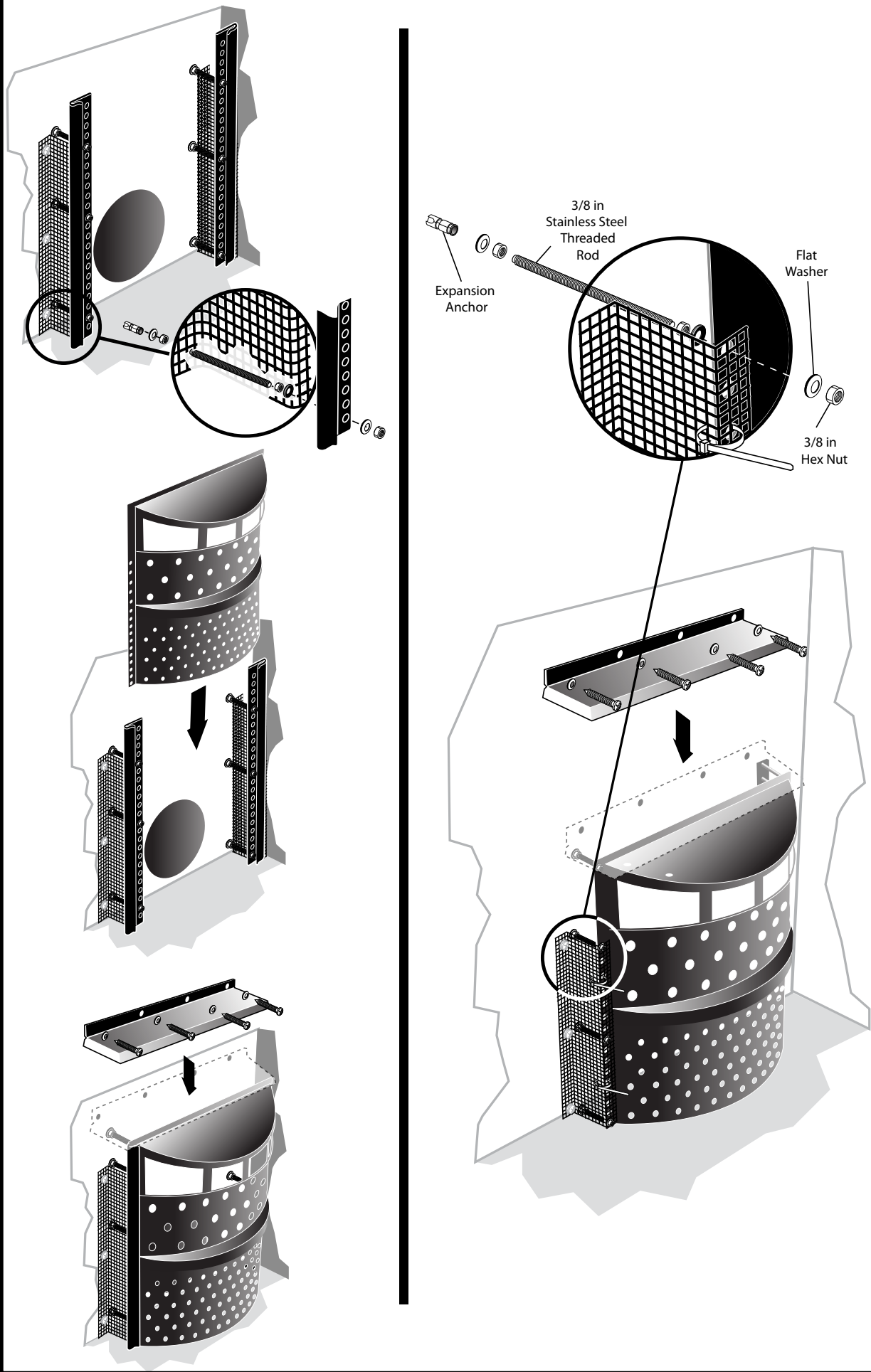
# Diagram F



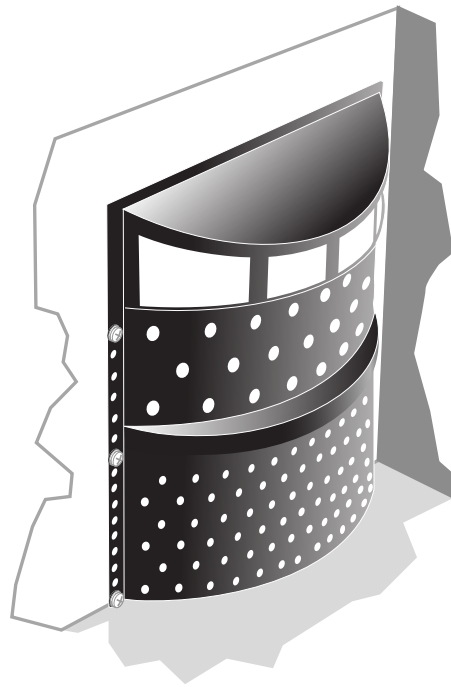
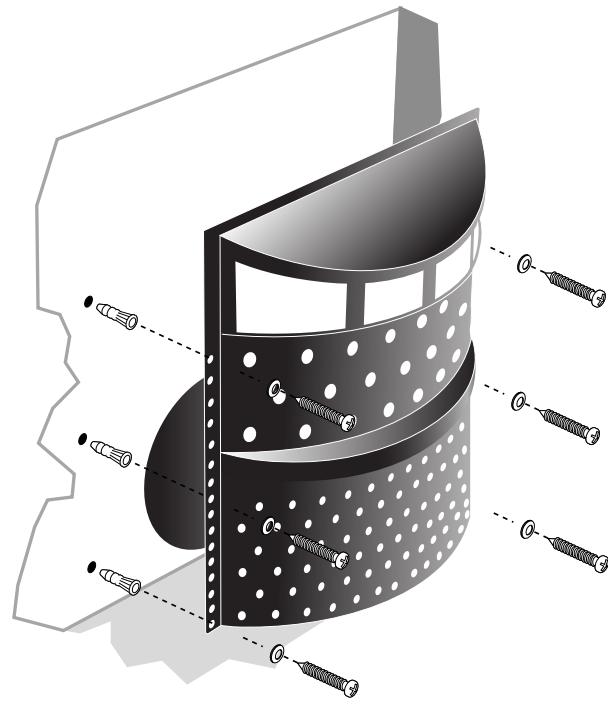
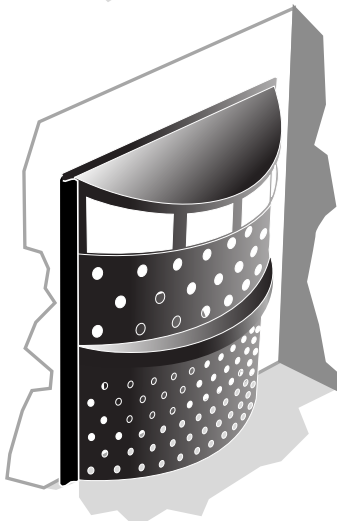
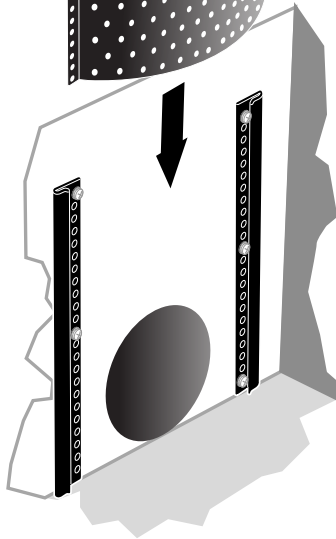
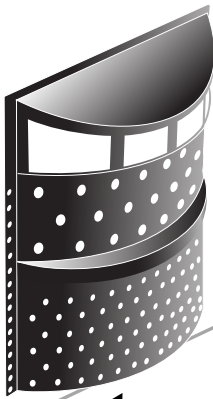
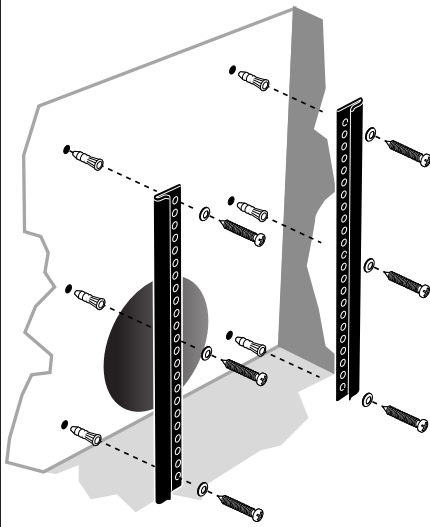
# Diagram G



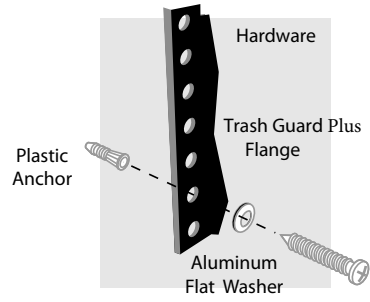
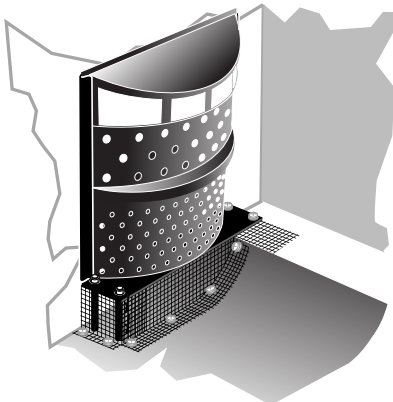
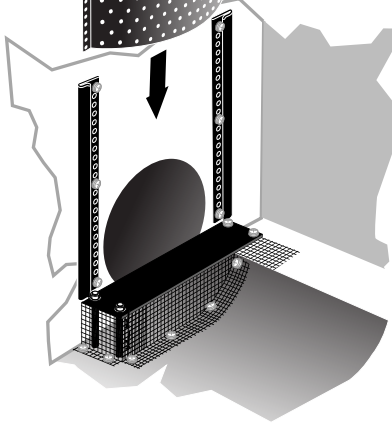
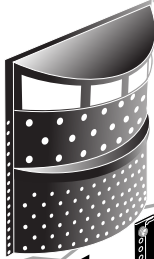
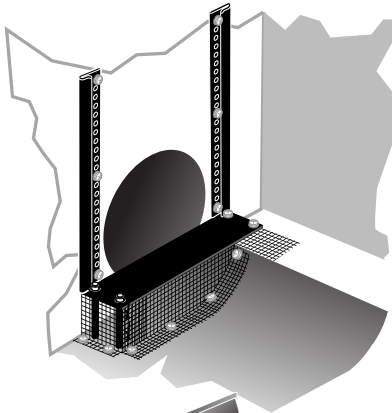
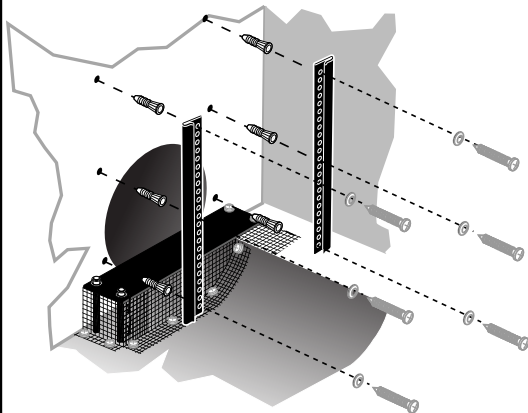
# Diagram H



# Diagram I



# Diagram J



1.75 in x .25 in  
Stainless Steel  
Phillips Screw

