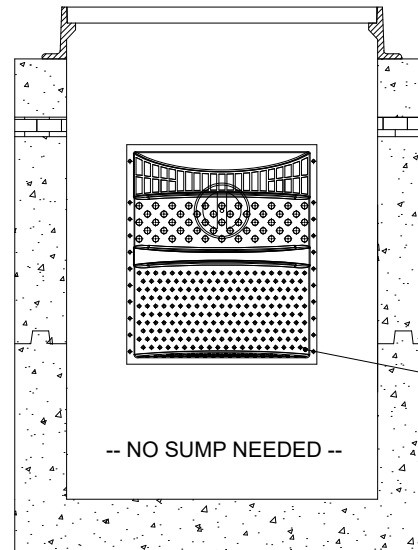
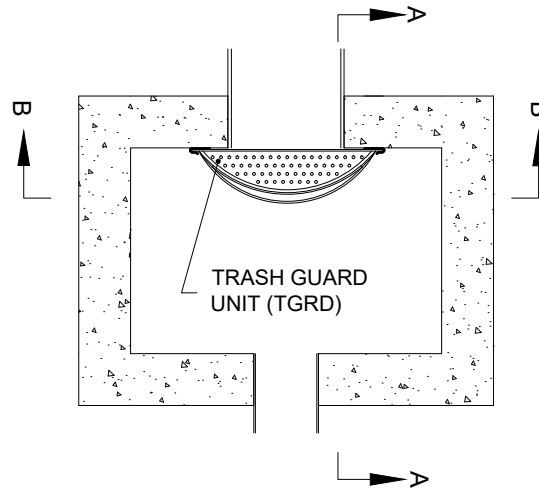


SIZE	A	B
23" x 24"	23"	26.51"
28" x 30"	28"	33.15"
34" x 36"	34"	38.69"

±0.25" TOLERANCE ON DIMENSIONS

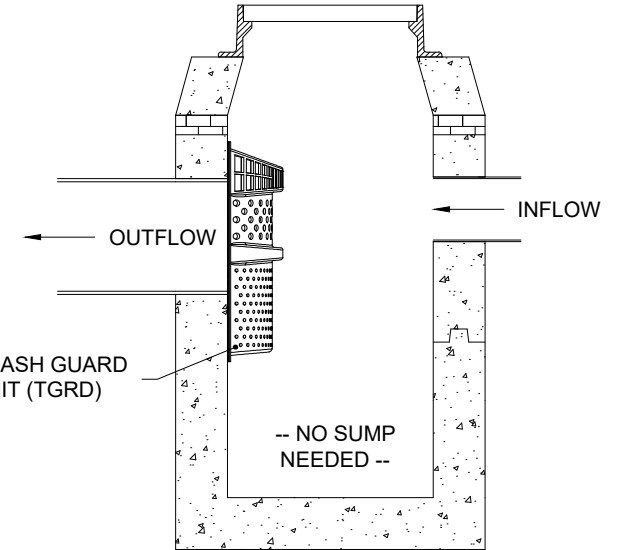
TRASHGUARD PLUS PRETREATMENT DETAIL



SECTION B-B

NOTES:

1. ALL CONCRETE COMPONENTS, INLET GRATE AND FRAME, INLET TRAP, AND CONNECTION TO SEWER SHALL BE _____ STANDARD CONSTRUCTION.
2. HIGHWAY INLET DEPICTED; DESIGN IS GENERALLY APPLICABLE TO ALL _____ STANDARD INLETS.
3. TRASH GUARD PLUS (TGRD) UNIT AND "PWD TGP HARDWARE KIT" TO BE PROVIDED BY ACF ENVIRONMENTAL
4. SEE TRASH GUARD INSTALLATION DETAIL FOR GUIDANCE ON INSTALLING UNIT.
5. SEE TRASHGUARD UNIT DETAILS FOR SYSTEM DIMENSIONS AND AVAILABLE SIZES.
6. "RAIL STOP BOLT" NOT NEEDED FOR THIS APPLICATION
7. NO "SUMP" IS REQUIRED FOR THE TRASHGUARD PLUS TO FUNCTION CORRECTLY.



SECTION A-A

TRASHGUARD PLUS PRETREATMENT INLET DETAIL



FOR ADDITIONAL INFORMATION PLEASE CONTACT:
FERGUSON WATERWORKS, 1-800-448-3636, www.ferguson.com

NOT TO SCALE

LAST REVISED: 6/23/2022

TRASHGUARD PLUS PRETREATMENT DETAIL